

THE   
CROWN

---

IT BELONGS TO YOU

3 & 4 BHK DREAM APARTMENTS

# THE LOCATION

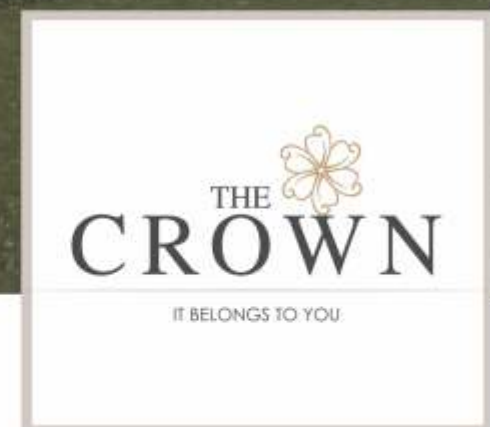
IN CLOSE PROXIMITY TO-

- ▶ Hotel Radisson Blu, Hotel Jaipur Marriott  
Hotel Bella Casa, Hotel Fern, Hotel Royal Orchid  
Hotel Clarks Amer, Hotel The Lalit
- ▶ Fortis Hospital, EHCC, Jaipuria Hospital  
Cocoon Hospital
- ▶ Gold Souk Mall, World Trade Park  
Entertainment Paradise (EP), Genpact
- ▶ Jaipur International Airport





**THE EXTERIOR:** Bird Eye View



**THE EXTERIOR:** Main Entrance View

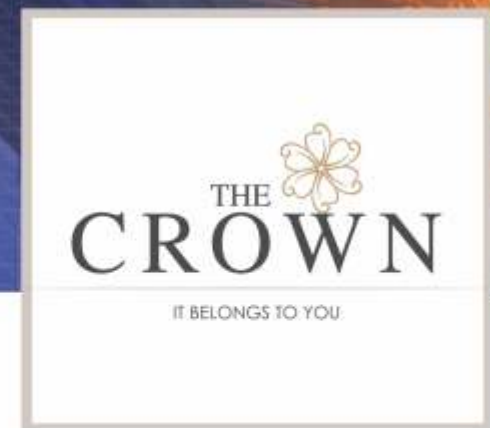


**THE EXTERIOR:** Dry Fountain Plaza



**THE EXTERIOR:** Arbor Lounge Cafe





**THE EXTERIOR:** Lap, Kids & Shallow Pool



**THE INTERIOR:** Grand Lobby Area







**THE INTERIOR:** Banquet Hall





**THE INTERIOR:** Cafeteria

THE  
**CROWN**  
IT BELONGS TO YOU



**THE INTERIOR:** Home-Theatre



**THE INTERIOR:** Library



# THE AMENITIES

## OUTDOOR SPACES

- ▣ Temple
- ▣ Guardhouse/Gate feature
- ▣ Drop off
- ▣ Feature path
- ▣ Party lawn
- ▣ Pool sunken seat
- ▣ Swimming pool
- ▣ Poolside deck
- ▣ Kid's pool
- ▣ Water play/Musical fountain
- ▣ Kid's playground
- ▣ Tea corner
- ▣ Organic farm
- ▣ Reflexology garden
- ▣ Meditation/Yoga lawn
- ▣ Reading garden
- ▣ Outdoor dancing
- ▣ Fitness area/Senior citizens area
- ▣ Cricket practise
- ▣ Basketball court
- ▣ Golf putting area
- ▣ Green amphitheatre

- ▣ Garden walkway
- ▣ Multi-purpose lawn
- ▣ Sculpture court/gallery garden
- ▣ Feature path with sunken seat
- ▣ Gallery walk
- ▣ Open lawn
- ▣ Ramp to basement parking
- ▣ Visitors' parking

## INDOOR SPACES

- ▣ Multi-purpose hall
- ▣ Pantry
- ▣ Aerobics/dance
- ▣ Gym
- ▣ Female spa
- ▣ Male spa
- ▣ Library/tuition room
- ▣ Kids play area
- ▣ Theatre
- ▣ Departmental store
- ▣ Table tennis/indoor games
- ▣ Billiards
- ▣ Indoor cafe
- ▣ Outdoor cafe

- ▣ Toilets
- ▣ Letter box
- ▣ Arrival hall
- ▣ Reception
- ▣ Office
- ▣ Salon
- ▣ Physically handicapped toilet

## BASEMENT LEGENDS

- ▣ Badminton court
- ▣ Squash Court

THE  
**CROWN**

IT BELONGS TO YOU

# THE CLUBHOUSE



Leisure Pool



Kid's Pool



Cafe



Party Lawn With Pool



Gymnasium



Meditation/yoga Room



Steam Bath



Basketball Pole



Jacuzzi



Mini Theatre



Amphitheatre



Arbor Lounge



Indoor Games Room  
(chess/carom/  
soccer Table)



Snooker Table/  
table Tennis



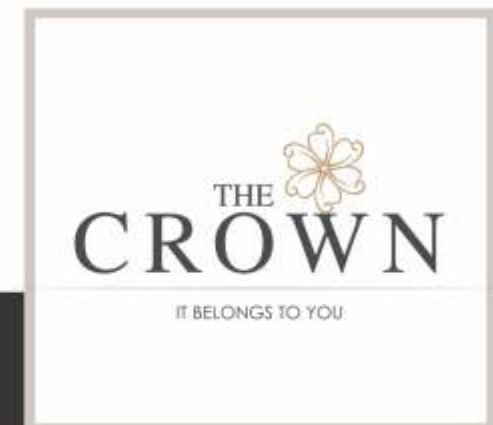
Squash Court



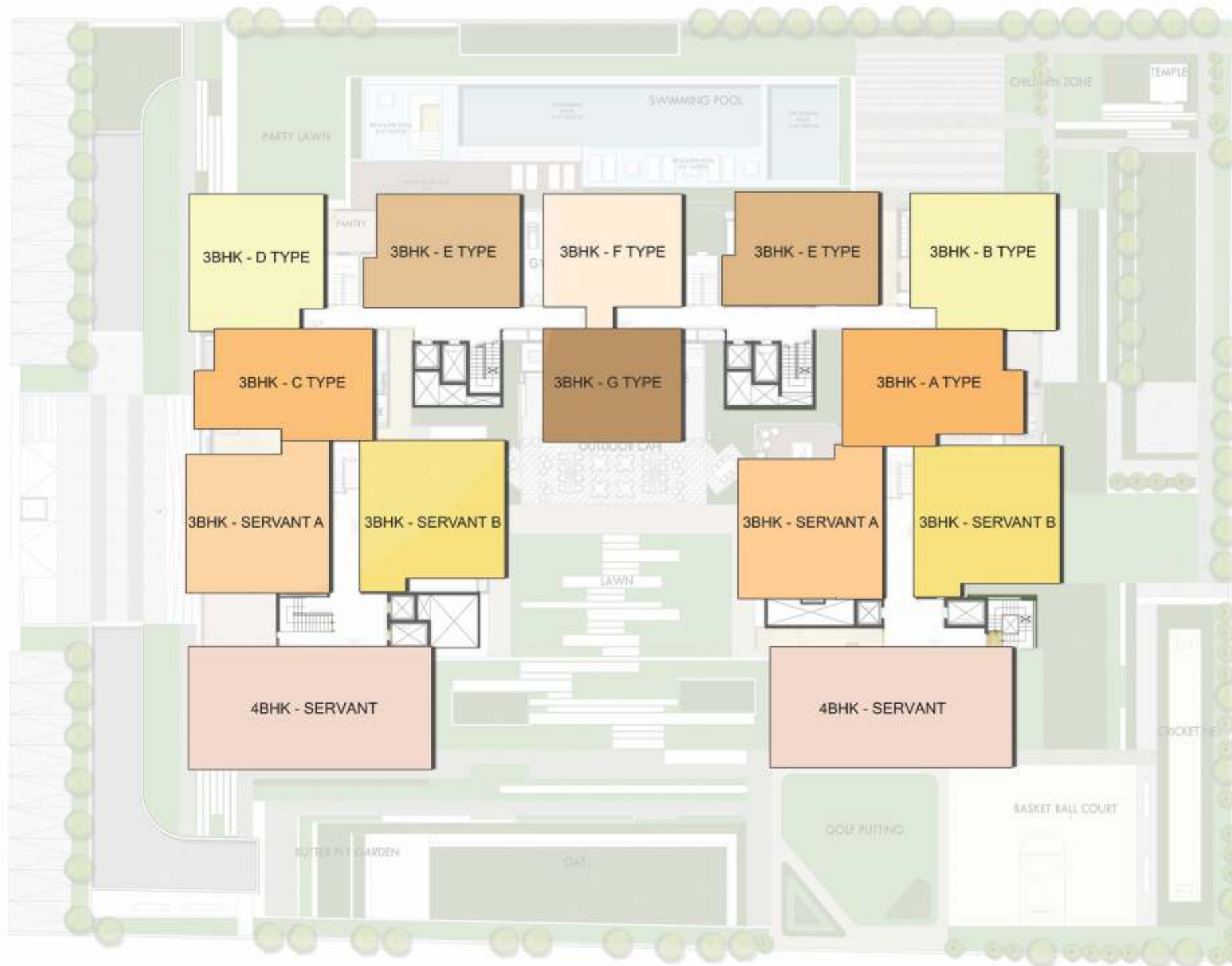
Indoor  
Badminton Court



Reflexology Zone



# BLOCK PLAN





UNIT PLAN

**3 BHK - TYPE A**

Built-up Area - 1297 Sq. Ft. | Saleable Area - 1751 Sq. Ft.



**THE CROWN**  
 IT BELONGS TO YOU





UNIT PLAN

**3 BHK - TYPE B**

Built-up Area - 1286 Sq. Ft. | Saleable Area - 1736 Sq. Ft.



**THE CROWN**  
 IT BELONGS TO YOU



UNIT PLAN

**3 BHK - TYPE C**

Built-up Area - 1263 Sq. Ft. | Saleable Area - 1705 Sq. Ft.



**THE CROWN**  
 IT BELONGS TO YOU



UNIT PLAN

3 BHK - TYPE D

Built-up Area - 1238 Sq. Ft. | Saleable Area - 1671 Sq. Ft.

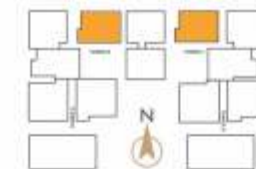




UNIT PLAN

**3 BHK - TYPE E**

Built-up Area - 1131 Sq. Ft. | Saleable Area - 1527 Sq. Ft.



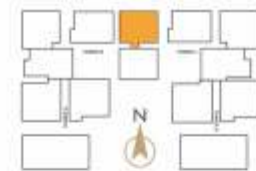
**THE CROWN**  
 IT BELONGS TO YOU.



UNIT PLAN

**3 BHK - TYPE F**

Built-up Area - 1095 Sq. Ft. | Saleable Area - 1478 Sq. Ft.



**THE CROWN**  
 IT BELONGS TO YOU




UNIT PLAN

3 BHK - TYPE G

Built-up Area - 1051 Sq. Ft. | Saleable Area - 1420 Sq. Ft.



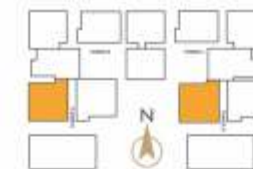
  
**THE CROWN**  
 IT BELONGS TO YOU



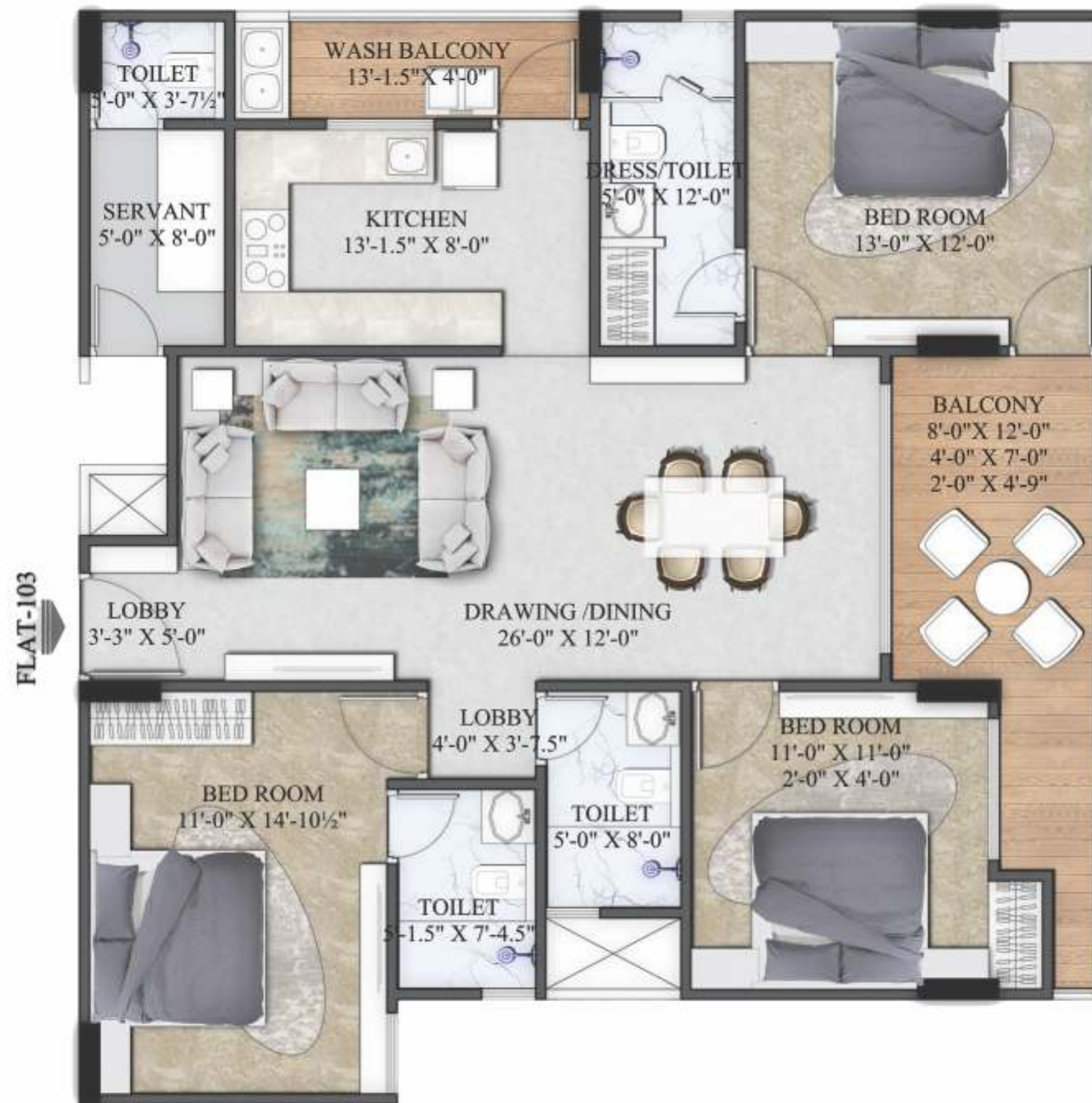
UNIT PLAN

**3 BHK+SERVANT - TYPE A**

Built-up Area - 1394 Sq. Ft. | Saleable Area - 1882 Sq. Ft.



**THE CROWN**  
 IT BELONGS TO YOU



UNIT PLAN

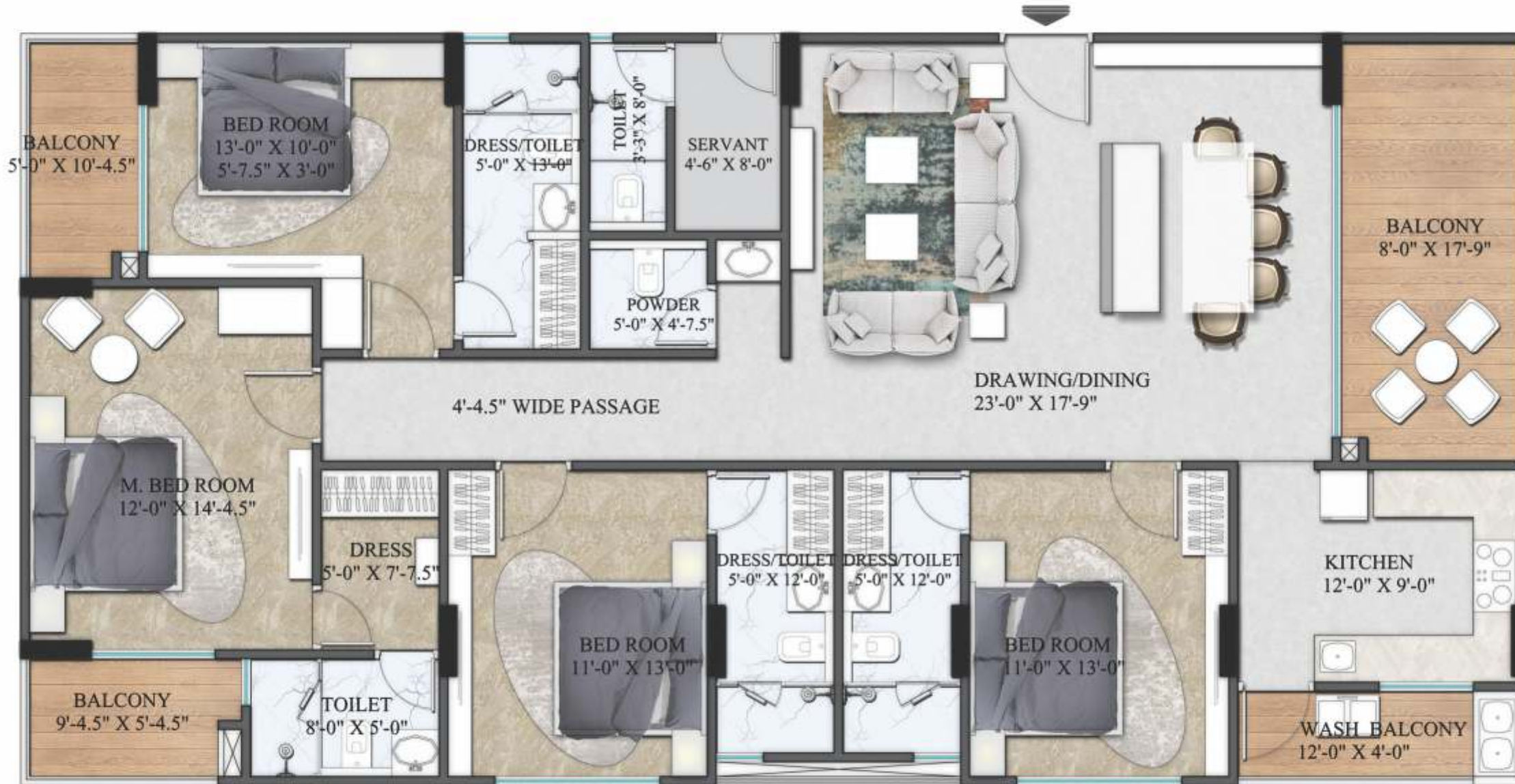
3 BHK+SERVANT - TYPE B

Built-up Area - 1395 Sq. Ft. | Saleable Area - 1883 Sq. Ft.



  
**THE CROWN**  
 IT BELONGS TO YOU





UNIT PLAN

**4 BHK+SERVANT**

Built-up Area - 2030 Sq. Ft. | Saleable Area - 2741 Sq. Ft.



**THE CROWN**  
 IT BELONGS TO YOU

# SPECIFICATIONS

## DRAWING/DINING

- Large size tile flooring
- 50mm thick designer door shutter with door frame and main entrance or equivalent
- High quality Euro profile aluminium/UPVC windows with two track system
- Acrylic emulsion paint on all internal walls & ceilings
- High-end electrical switches

## BEDROOMS

- Large size tile flooring
- Veneered/laminated flush door with door frame, 35mm thick or equivalent
- High quality euro profile aluminium/UPVC windows with two track system
- Acrylic emulsion paint on all internal walls & ceilings
- High-end electrical switches

## WASHROOM

- Anti-skid tiles for flooring
- Veneered/laminated flush door with door frame or equivalent
- Over the counter basin with granite top
- Separate wet area with glass partition
- Head shower
- Provision for geyser, exhaust fan
- C.P fitting of international quality brand
- Grid false ceiling

## KITCHEN

- Modular kitchen
- Anti-skid tiles for flooring
- Acrylic emulsion paint in left over areas
- High quality Euro profile aluminium/UPVC windows with two track system
- Granite top counters
- Premium modular switches
- Gas hob, gas pipeline and gas detector
- Provision for geyser, exhaust fan & RO unit
- Washing machine point in utility area

## BALCONY AND TERRACES

- Anti-skid tiles for flooring
- Glass railing with SS handrail

## HOME AUTOMATION

- All major functional controls in living area
- Video door phone
- Panic button in kitchen/master bedroom
- Lighting automation in living and bedroom area
- Provision of expanding this system for complete automation



# LANDSCAPING BY ONE

One is a well-known boutique design studio specializing in high-end contemporary landscape architecture, urban design, public art and environmental planning. With its head office in Hong Kong, One covers the geographical domains of China, Southeast Asia, India and Middle East. One's design philosophy draws inspiration from site's culture and texture and develops a big idea by integrating elements of architecture, landscape and art. In India One's portfolio includes clients like Tata (Mumbai), Godrej (Mumbai), Kalptaru (Mumbai), Runwal (Mumbai), Peninsula Land (Mumbai), Rohan Group (Pune), Arul Excello Group (Chennai), Mihra Group (Mumbai), Forum Group (Kolkata), Hiland Group (Kolkata) and Infinity Group (Kolkata). The core objective of 'One' is to create masterpieces in art by creating a seamless connection between indoor and outdoor environment and combining construction elements with design work.

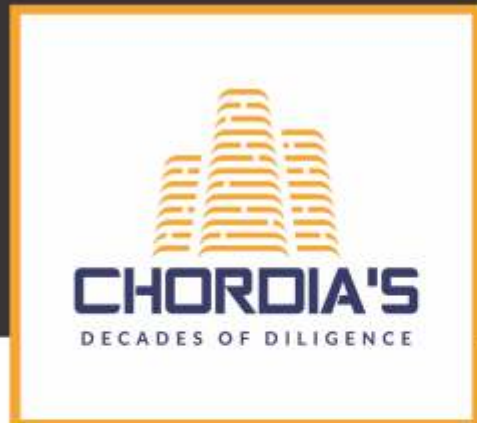
ONE  
landscape art urbanism

ONE LANDSCAPE DESIGN LIMITED  
WAN CHAI, HONG KONG



THE  
CROWN  
IT BELONGS TO YOU

# THANK YOU



## GORBANDH FORT AND PALACE LLP

The Crown, A6, Tonk Road, Airport Enclave Scheme  
Durgapura, Jaipur - 302018  
E-mail: [crown@chordiasgroup.com](mailto:crown@chordiasgroup.com)

M: 7300009300 | [www.thecrownjaipur.in](http://www.thecrownjaipur.in) | Find us on 